

Model:TLPA26.5G40G-37-37
Power Amplifier
26.5-40GHz,Gain:40dB,Psat:40dBm
Feature:

- Ultra Wide Band: 26.5-40 GHz
- Gain: 40 dB Min
- Psat Output Power: 40 dBm Typ
- Good Power and Gain Flatness
- 50 Ohm Matched Input / Output

电气特性 Electrical Specifications:

参数 Parameter	Min	Typ	Max	单位 Units
频率范围 Frequency range	26.5-40			GHz
增益 Gain	40			dB
线性输出功率 Output P1dB		37		dBm
饱和输出功率 Output Psat		40		dBm
ALC精度 ALC accuracy		±0.5		dB
杂散 Supurious			-50	dBc
谐波 Harmonic			-25	dBc
输入驻波 Input VSWR			2.0	:1
交流电压 AC Voltage	220			V AC
功耗 Power Consumption	150@Max			W
阻抗 Impedance	50			Ohms

机械特性 Mechanical Specifications:

参数 Parameter	指标 Value	单位 Units
输入/输出接口 Input /Output Connector	2.92mm Female/2.92mm Female	
直流偏置 DC Bias	Solder Pin	
尺寸 Size	200*200*85	mm
重量 Weight	≤5	Kg

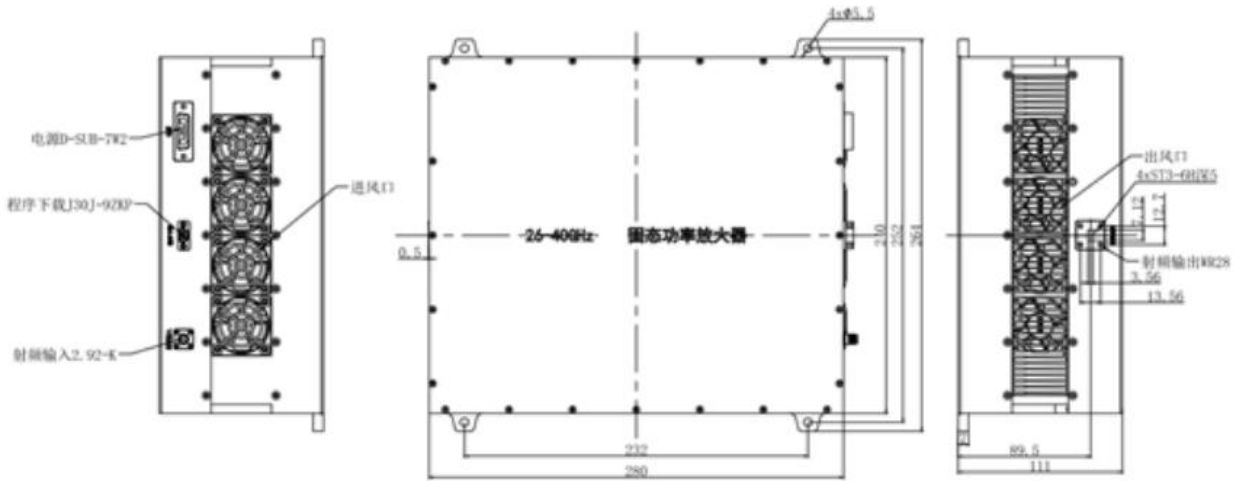
绝对最大值 Absolute Maximum Ratings:

参数 Parameter	指标 Value
供电偏置电压 Supply Bias Voltage	TBD
输入功率 RF Input Power	+10 dBm
ESD灵敏度 ESD sensitivity (HBm)	Class 0, passed 150V


**Available 220V System
 Benchtop Amplifier**

外形尺寸 Outline Drawing:

Unit: mm



OBSERVE PRECAUTIONS
ELECTROSTATIC SENSITIVE
DEVICES

温度环境 Environmental Conditions:

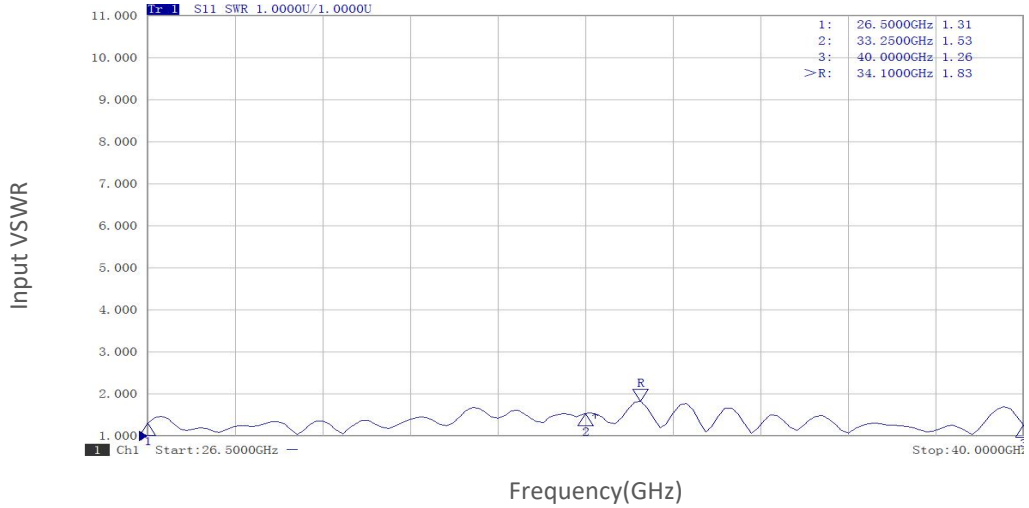
参数 Parameter	Min	Typ	Max	单位 Units
操作温度 Operating Temperature	-20		+50	°C
存储温度 Non-operating Temperature	-55		+85	°C
相对湿度 Relative humidity		95		%
海拔 Altitude	30,000			feet
震动 Shock / Vibration(MIL-STD-810F)	20g,11ms,saw-tooth			
冲击 Shock(non operating)	20G for 11msc half sin wave,3 axis both directions			

订货信息 Ordering Information:

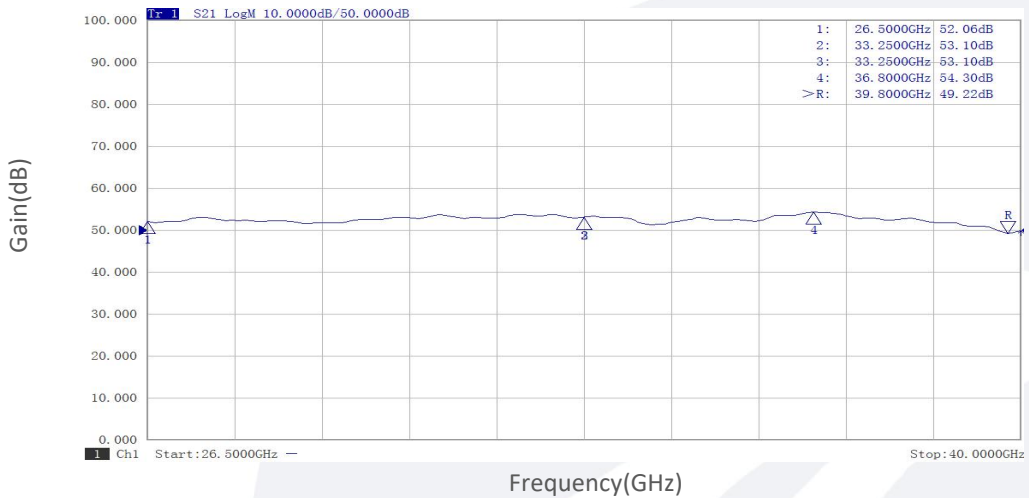
标准型号 Part Number	描述 Description	版本号 Revision
TLPA26.5G40G-37-37	Power amplifier 26.5-40GHz, Gain:40dB, Psat:40dBm, 220V AC	Rev.1.1

典型曲线 Typical Performance Data:

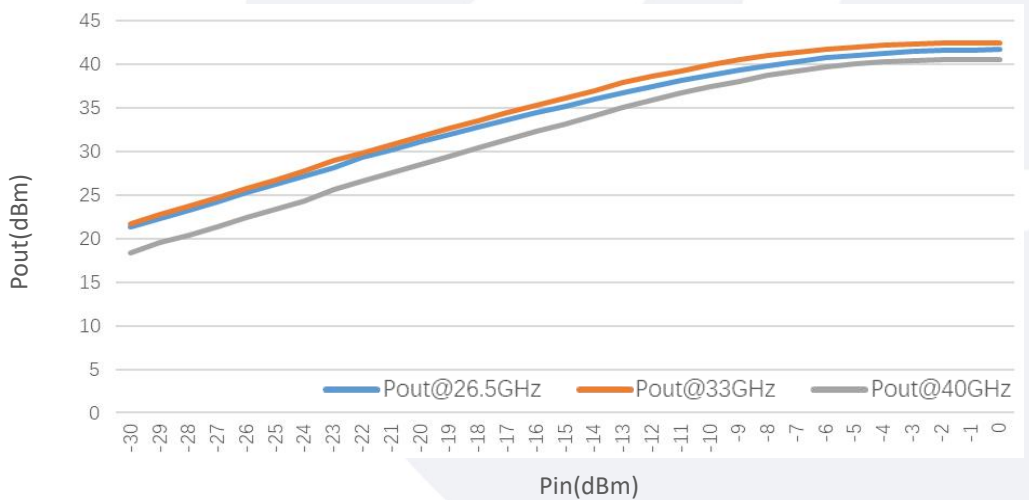
Input VSWR vs Frequency



Gain vs Frequency

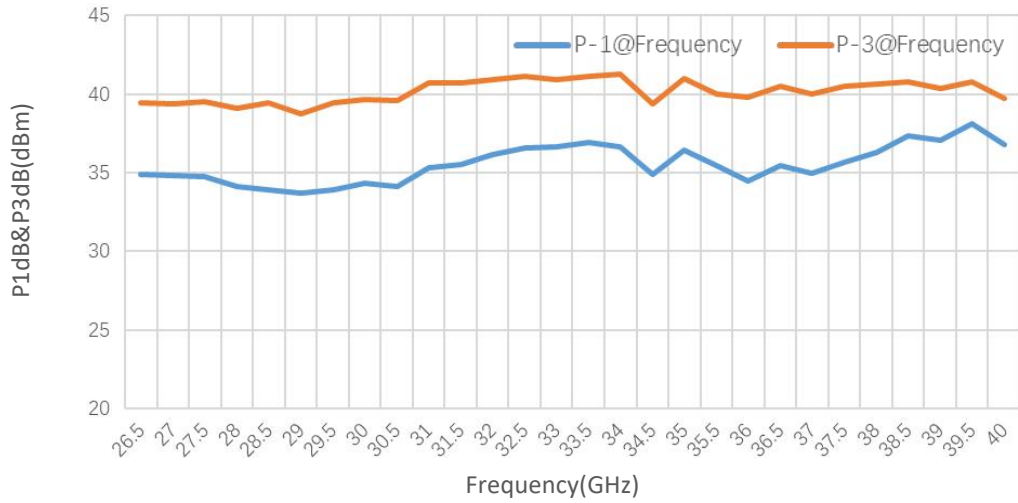


Pout@Pin

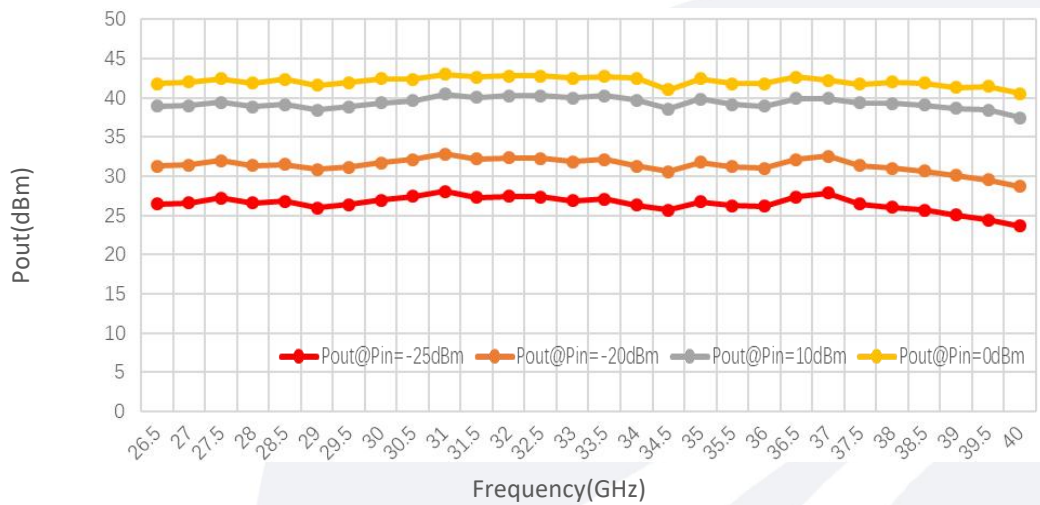


典型曲线 Typical Performance Data:

P1dB&P3dB vs Frequency



Pout@Equal_Pin



Spurious vs Frequency

