

**Model: TLP6G18G-47-47-BC**
**Solid State High Power Amplifier Systems  
 6-18GHz, Gain: 47dB, Psat: 47dBm, 110V AC**
**Feature:**

- Wide Band: 6-18GHz
- Gain: 47dB Min
- Psat Output Power: 47dBm Min
- Protection: Over TEM, over voltage, over current, over VSWR protection.
- 50 Ohm Matched Input / Output


**电气特性 Electrical Specifications:**

参数 Parameter	代码 Sympo	Min	Typ	Max	单位 Units
频率范围 Frequency range	BW	6-18			GHz
增益 Gain	GP	47			dB
增益平坦度 Gain flatness	$\Delta$ GL			$\pm 4.5$	dB
线性输出功率 Output P1dB	P1dB		42		dBm
饱和输出功率 Output Psat	Psat	47			dBm
杂散 Spurious@Pout=47dBm	Spur			-60	dBc
谐波 Harmonics@Pout=47dBm	HAM			-10	dBc
输入驻波 Input VSWR	VSWRin			2.0	:1
交流电压 AC Voltage	Vac	110			V AC
功耗 Power Consumption	Pdiss	800@Max			Watts
阻抗 Impedance	I/O-IMP	50			Ohms

**机械特性 Mechanical Specifications:**

参数 Parameter	指标 Value	单位 Units
输入/输出接口 Input/Output Connector	N Female/SMA Female	
尺寸 Size	19 Inch 4U*550 depth	mm
重量 Weight	$\leq 20$	Kg

**绝对最大值 Absolute Maximum Ratings:**

参数 Parameter	指标 Value
输入功率 RF Input Power	10 dBm
ESD灵敏度 ESD sensitivity (HBm)	Class 0, passed 150V

外形尺寸 Outline Drawing:

Unit: mm



主要功能 Key Features:



OBSERVE PRECAUTIONS  
ELECTROSTATIC SENSITIVE  
DEVICES

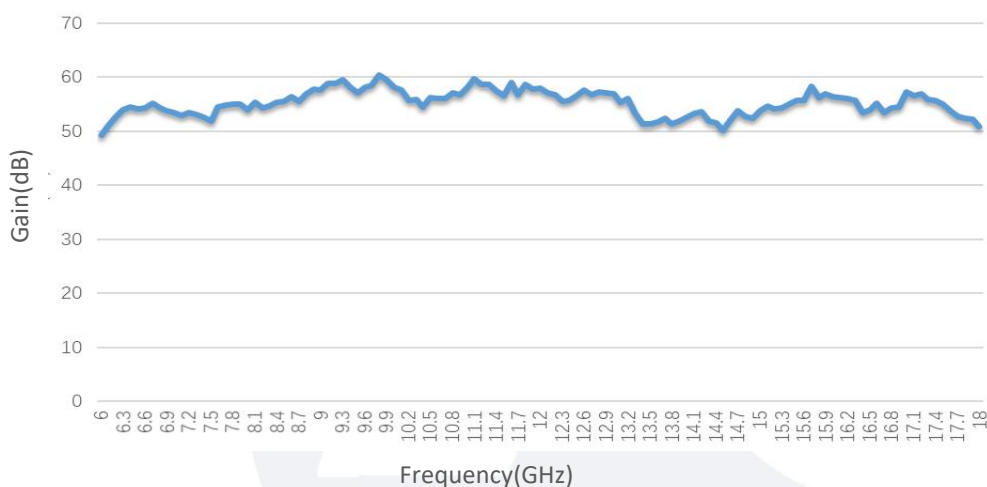
参数 Parameter	特点 Advantages
控制 Control	RS422/Ethernet, LCD Screen Display
内置保护功能 Protection functions	1, Over TEM 2, Over voltage 3, Over current protection 4, Over VSWR
控制功能 Control functions	1, Power setting On/Off 2, ALC
冷却系统 Cooling system	Built in Cooling system, forced air cooling

**温度环境 Environmental Conditions:**

参数 Parameter	Min	Typ	Max	单位 Units
操作温度 Operating Temperature	-20		+50	°C
存储温度 Non-operating Temperature	-45		+65	°C
相对湿度 Relative humidity		95		%
海拔 Altitude	50000			feet
震动 Shock / Vibration(MIL-STD- 810F)	25g rms (15 degree 2KHz) endurance, 1 hour per axis			
冲击 Shock(non operating)	20G for 11msc half sin wave,3 axis both directions			

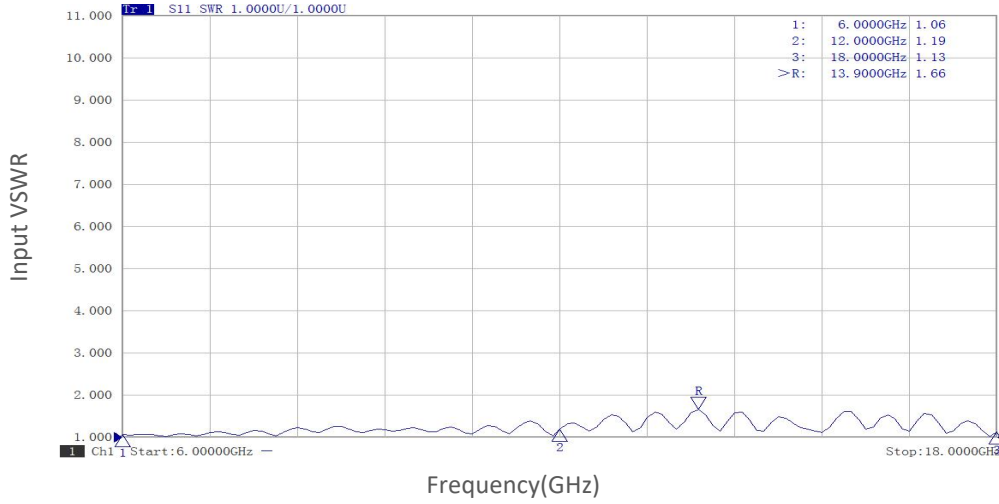
**订货信息 Ordering Information:**

标准型号 Part Number	描述 Description	版本号 Revision
TLPA6G18G-47-47-BC	Solid State High Power Amplifier Systems 6-18GHz,Gain:47dB,Psat:47dBm,110V AC,Built in Fan Cooling	Rev.1.0

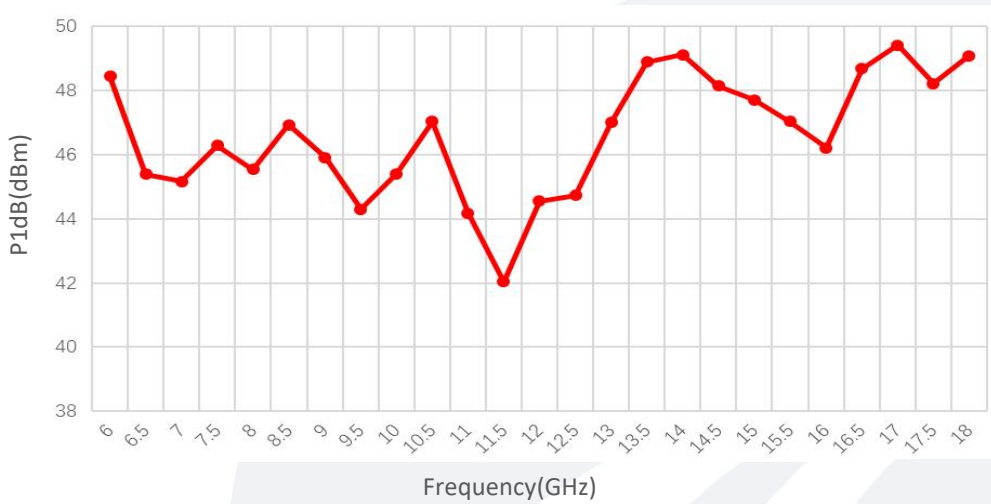
**典型曲线 Typical Performance Data:**
**Gain vs Frequency**


典型曲线 Typical Performance Data:

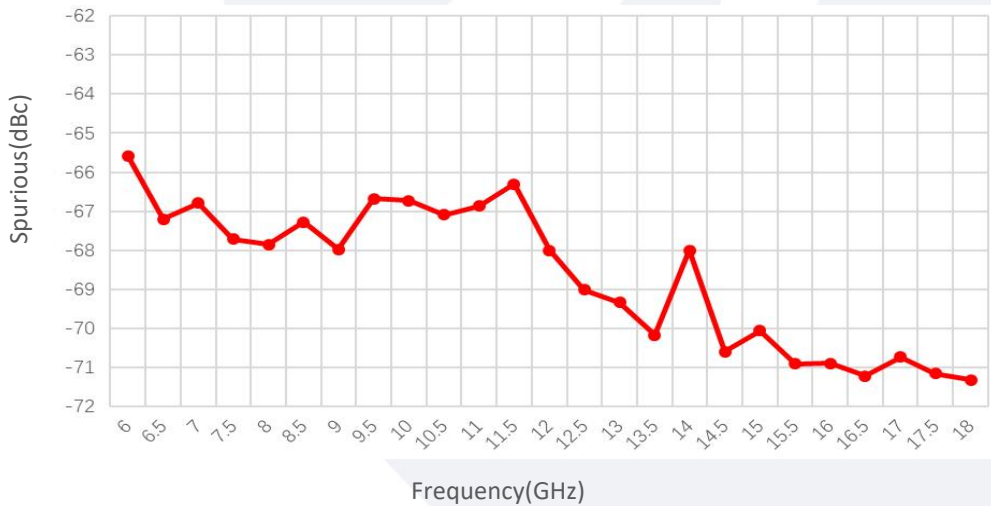
Input VSWR vs Frequency



P1dB vs Frequency

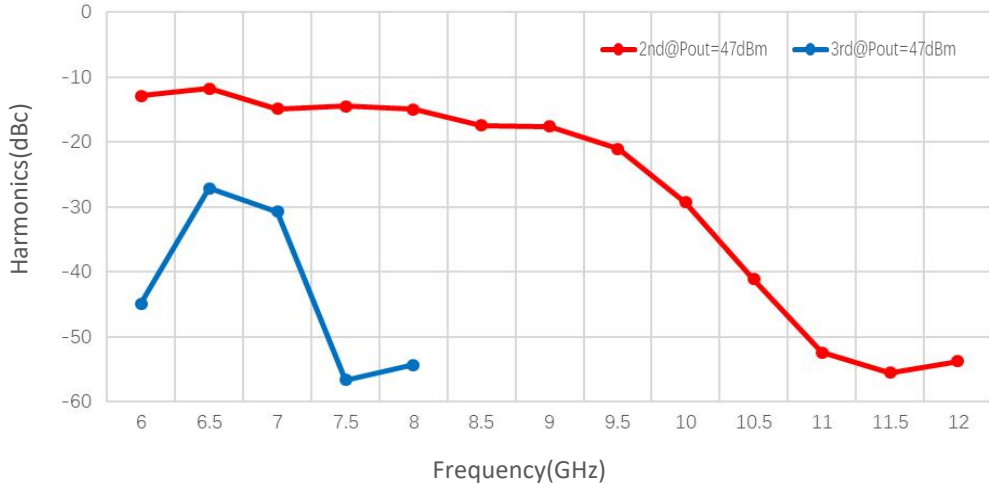


Spurious@Pout=47dBm

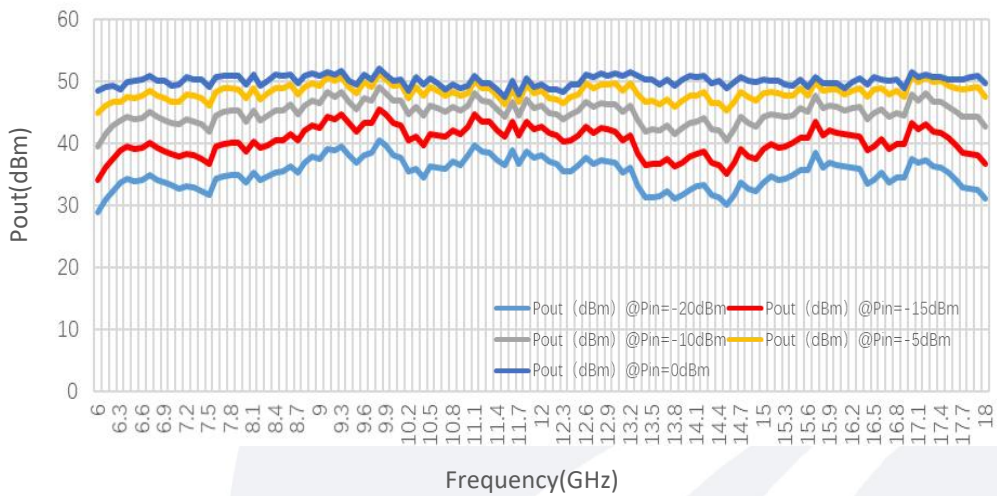


典型曲线 Typical Performance Data:

Harmonics@Pout=47dBm



Pout@Equal\_Pin



Pout@Pin

