

**Model: TLHM-140220-0230-05**
**Sub-Harmonic Mixer**
**RF:140-220 GHz, LO:70-110GHz, IF:DC-30 GHz**
**Feature:**

- Low LO Power Requirement
- Subharmonic Mixing
- Compact Package

**电气特性 Electrical Specifications:**

参数Parameter	Min	Typ	Max	单位Units
RF频率 RF Frequency	140		220	GHz
LO频率 LO Frequency	70		110	GHz
IF频率 IF Frequency	DC		30	GHz
LO 驱动功率 LO-Input power		8		dBm
射频输入功率 RF Input Power		-15	0	dBm
2XLO至RF隔离 2XLO to RF Isolation		-20		dBc
单边带变频损耗 SSB Conversion Loss	-6	-8	-10	dB

**机械特性 Mechanical Specifications:**

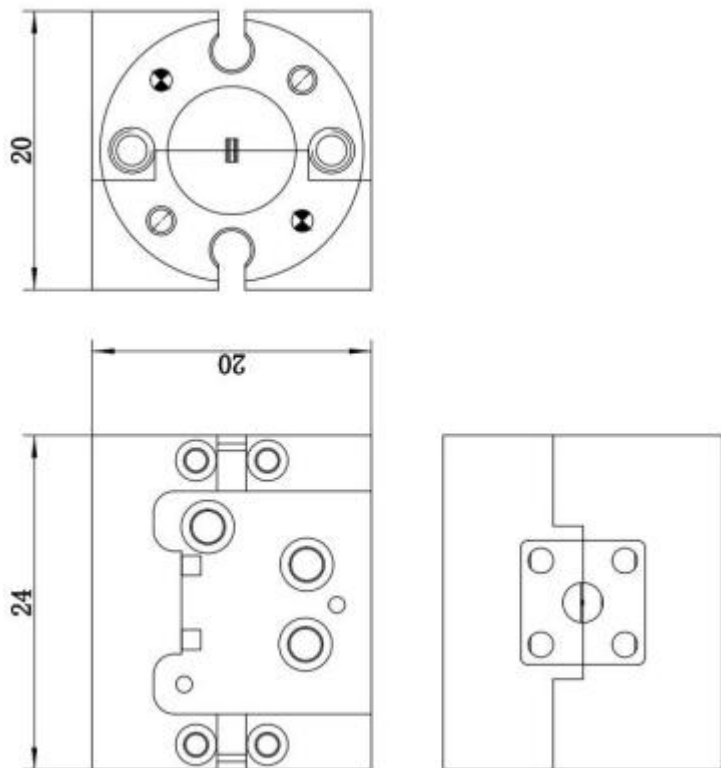
参数Parameter	指标 Value	单位Units
RF 接口RF Connector	WR-5.1/UG-387	
LO 接口LO Connector	WR-10/UG-387	
IF 接口 IF Connector	2.92mm Female	
尺寸 Size	24*20*20	mm

**绝对最大值 Absolute Maximum Ratings:**

参数Parameter	指标 Value
RF 功率 RF Input Power	0dBm
IF功率 IF Input Power	0dBm
LO功率 LO Input Power	15dBm
ESD灵敏度 ESD sensitivity (HBm)	Class 0, passed 150V

**外形尺寸 Outline Drawing:**

Unit: mm


 OBSERVE PRECAUTIONS  
 ELECTROSTATIC SENSITIVE  
 DEVICES

**温度环境 Environmental Conditions:**

参数Parameter	Min	Typ	Max	单位Units
操作温度 Operating Temperature	0		+50	°C
存储温度 Non-operating Temperature	-45		+85	°C
相对湿度 Relative humidity		95		%
海拔 Altitude	50,000			feet
震动 Shock / Vibration(MIL-STD-810F)	25g rms (15 degree 2KHz) endurance, 1 hour per axis			
冲击 Shock(non operating)	20G for 11msc half sin wave,3 axis both directions			

**订货信息 Ordering Information:**

标准型号 Part Number	描述 Description	版本号Revision
TLHM-140220-0230-05	Subharmonically Mixer RF:140-220GHz,LO:70-110GHz,IF:DC-30GHz	Rev.1.1

典型曲线 Typical Performance Data:

Conversion Loss vs RF Frequency

